

NIGHTSEA

Stereo Microscope Fluorescence Adapter System

NIGHTSEA's Stereo Microscope Fluorescence Adapter adds fluorescence to just about any stereo microscope with no modification to the microscope. The modular design lets you easily switch between several different excitation/emission combinations to work with a variety of fluorescent proteins and other fluorophores.

Bright, affordable and perfect for research laboratories and the classroom.



The Stereo Microscope Fluorescence Adapter system consists of:

- ▷ Flexible gooseneck lamp base with power supply
- ▷ Light head
- ▷ Ring adapter for microscope
- ▷ Barrier filter
- ▷ Filter shield

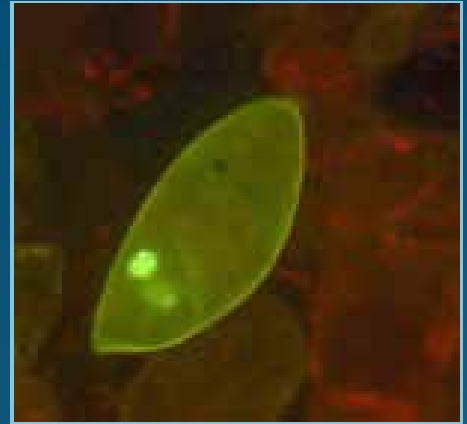
Bone Fragment



White Light

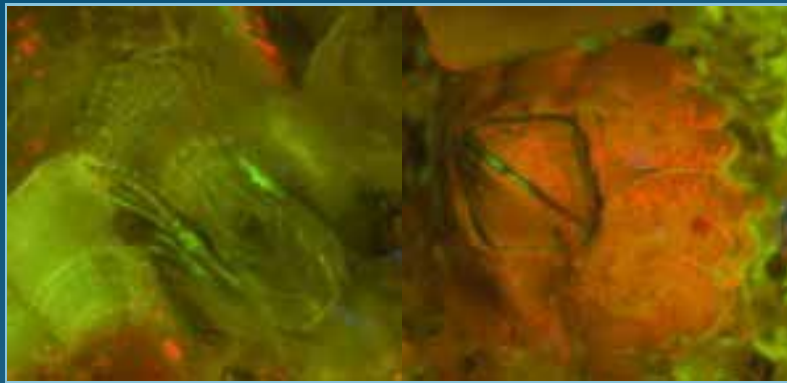
UV Light

Ostracod



Royal Blue

Barnacle



Royal Blue

Royal Blue

Filter Set	Excitation	Emission	Fluorophores
Royal Blue	440-460nm	500nm longpass	GFP, eGFP, FITC, calcein, and lucifer yellow
Royal Blue-green only	440-460nm	500-560nm bandpass	GFP, eGFP, FITC, calcein, and lucifer yellow
Green	510-540nm	600nm longpass filter	DsRed, TdTomato, RFP, etc
Cyan	490-515nm	550nm longpass filter	YFP, Venus, etc
Violet	400-415nm	460nm longpass filter	CFP, etc
Ultraviolet	360-380nm	415nm longpass filter	DAPI, Hoechst, etc

Please contact
Maureen Donahue
for additional information
or to arrange a demonstration